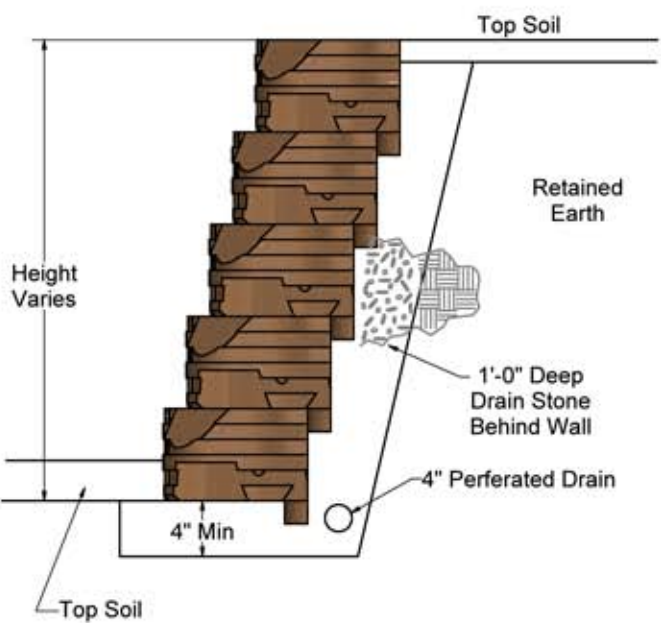
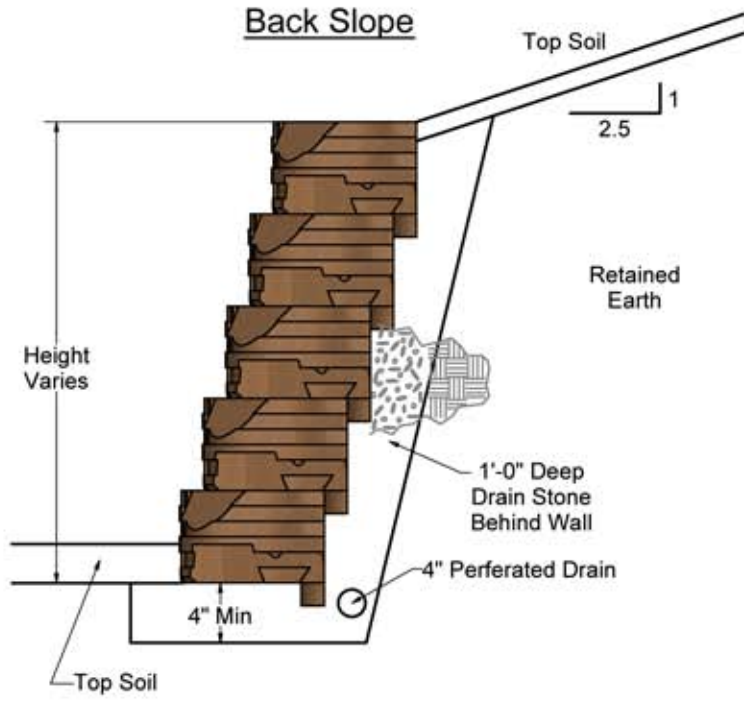


Typical 18" Non-Reinforced Wall Details (3" Set Back Typ.)

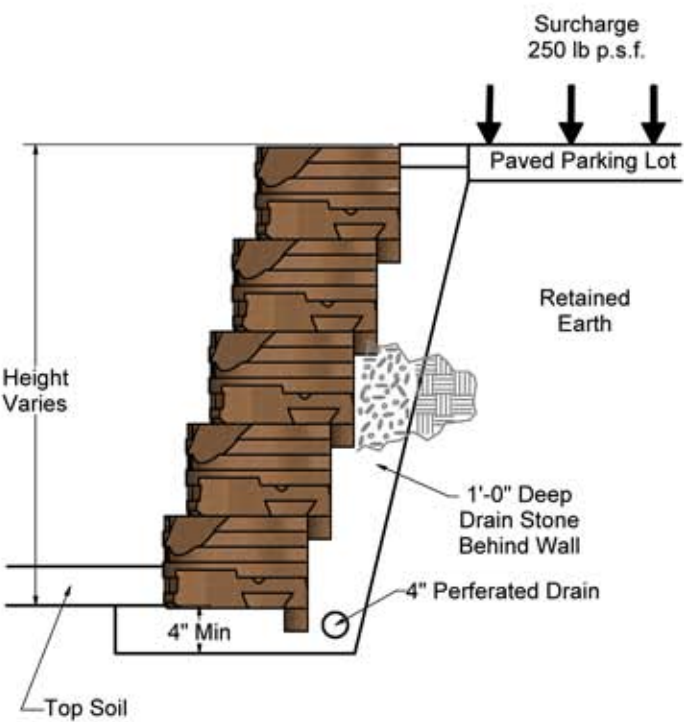
No Back Slope



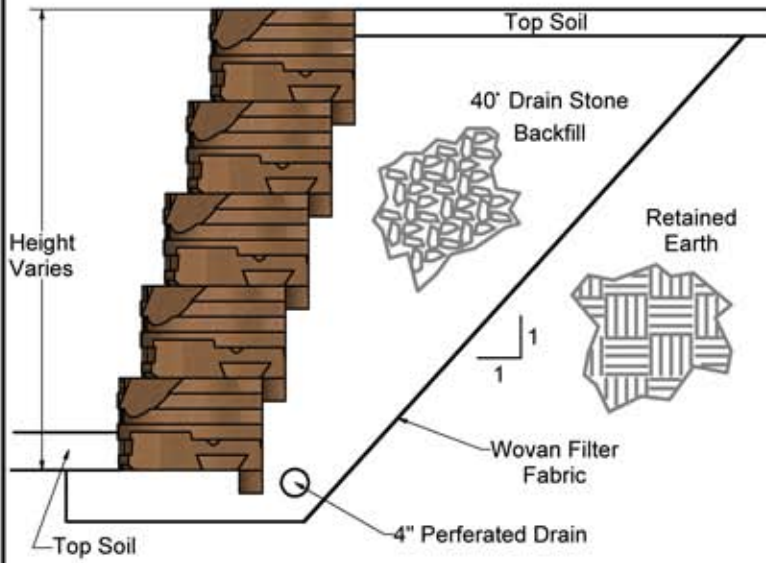
Back Slope



250 lb p.s.f. Surcharge



40' All Stone Backfill No Back slope



DRAWN	RRI	9/20/2006	ROSETTA HARDSCAPES, LLC	
CHECKED			DWG NO	REV
APPROVED			TYP TOUCHSTONE DETAILS.idw	
			SCALE	SHEET 1 OF 1